

## QX™ Integrated Converter Silencer

>> **Integrated Critical & Hospital Grade Silencing** >> **Reduce NOx, CO, NMHC & HAPs**

### Applications:

>> Gas Compression >> Power Generation >> CHP and Cogeneration >> Pumping

### Features:

- >> 3-way or 2-way Catalytic Performance
- >> Single or Dual Catalyst Elements
- >> Brazed Element for Superior Strength and Longevity
- >> Engineered for Lowest Achievable Pressure Drop
- >> All Welded, Double Walled Heavy Duty Construction
- >> Horizontal or Vertical Installation
- >> Optional in Stainless Steel

### Fuels:

- >> Natural Gas >> LPG >> Propane
- >> Diesel >> Dual Fuel

Built for strength and designed to meet the most stringent emissions standards, Johnson Matthey's QX™ converter silencer uses advanced technologies to effectively control emissions as well as reduce noise from stationary, internal combustion engines. The QX eliminates the need to buy two products to attain emission and noise compliance. It's the one that does both... and it comes from the world's leading supplier of catalysts—Johnson Matthey.

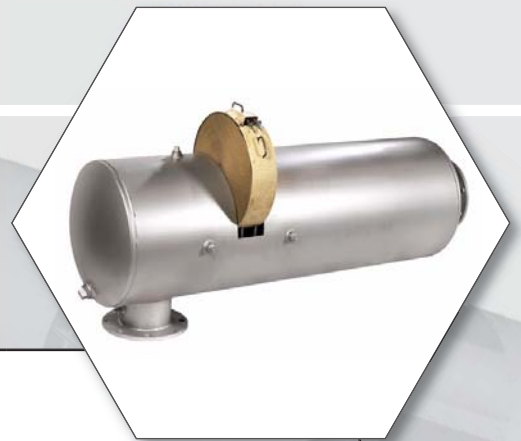
### Advanced Performance and Technology

The QX converter silencer is ready for 2007 and beyond thanks to a high performance catalyst formulation and exhaust bypass protection. What's more, QX converter silencers employ NSCR 3-way catalysts to reduce NOx, CO and THC emissions or 2-way oxidation catalysts to reduce CO, NMHC and HAPs emissions, including Formaldehyde, Acetaldehyde, Acrolein and Methanol. The QX works to convert these pollutants into environmentally safe nitrogen, carbon dioxide and water.

### Easy, Quick Access

Leading-edge design allows easy installation and removal of the catalyst element. Simply unlatch the cover and set it aside. Remove the catalyst retainer, then the element. Reverse the process to install and ensure that all is secure. This takes "man minutes, not man hours."

[www.jmssec.com](http://www.jmssec.com)



**Johnson Matthey**

Stationary Source Emissions Control

Suite 200, 400 Lapp Road, Malvern, PA 19355, USA

TEL: (484) 320-2136, FAX: (484) 320-2152

[www.jmssec.com](http://www.jmssec.com) [info@jmssec.com](mailto:info@jmssec.com)

## QX™ Integrated Converter Silencer

**QX™ Integrates Advanced Design and Technology for Emissions Compliance with Noise Reduction**

### Strong and Quiet

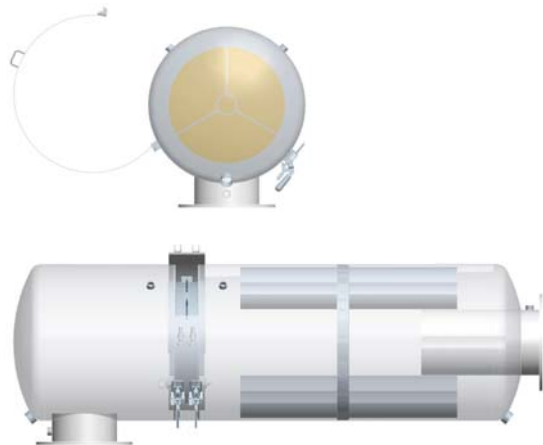
Johnson Matthey's technology exceeds generally accepted standards for attaining either hospital or critical grade sound attenuation. Our superior design yields the lowest achievable back pressure without sacrificing acoustical performance, giving you the most practical solution for emissions and noise control. The **QX** is especially recommended for use where equipment must operate continuously in quiet locations, such as: hospitals, schools, stores, apartment buildings, hotels and residential districts. The strength of the **QX** is built in, achieving resistance to structural deterioration despite rigorous engine operating conditions.

### The Superior Strength and Longevity of Cutting-Edge Brazing Technology

Custom-formulated for your emissions solution, Johnson Matthey brazed, thin-walled, honeycomb metal monolith catalysts are made of durable, heat-resistant stainless steel. Instead of using mechanical means, each layer of our catalyst element is securely bonded to each other by brazing. This creates unparalleled resistance to element sagging, distortion and unraveling due to engine operations. It also provides optimum protection from corrosive engine gases and atmospheric pressure and makes it nearly impervious to damage from mechanical or thermal shock and metallurgic erosion, which extends catalyst life. With a greater open area than other catalysts, the Johnson Matthey catalysts element delivers extremely low back pressure, resulting in improved engine efficiency and reduced fuel usage. And, the **QX** offers installation flexibility with single/dual elements, end-in, end-out or side-in, end-out, as well as horizontal or vertical mountings.

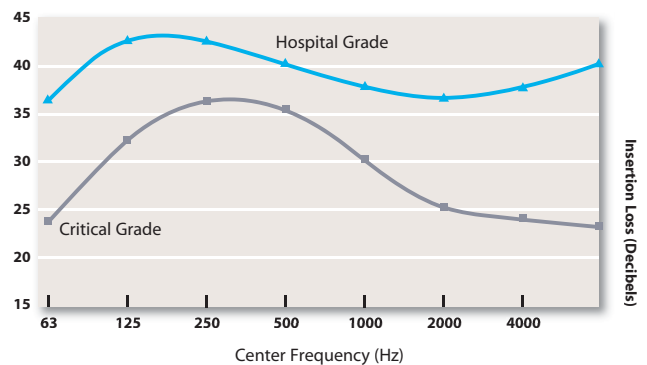
### An Added Benefit: The Best Support from Johnson Matthey

Johnson Matthey's total systems approach provides all the resources you need for installation, monitoring, testing and servicing. Our engineering resources, analytical testing capabilities and expertise in catalyst washing and rejuvenation are all available to help you maintain your catalyst at peak performance—all with a minimum of downtime. You can depend on an expert team—ready to serve you anywhere—for diagnostics, installation, guaranteed catalyst supply and more. **QX** by Johnson Matthey—the quiet, integrated catalytic silencer that gets you ready for 2007 and beyond.



JOHNSON MATTHEY QX MODEL

#### Representative Attenuation Curves Octave Band



**Johnson Matthey**

Stationary Source Emissions Control

Suite 200, 400 Lapp Road, Malvern, PA 19355, USA

TEL: (484) 320-2136, FAX: (484) 320-2152

www.jmssec.com info@jmssec.com

www.jmssec.com